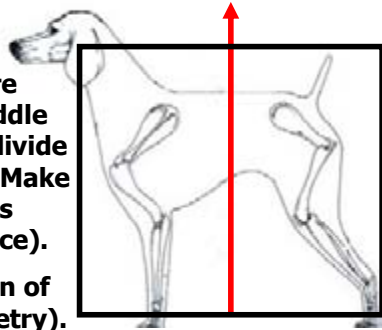


# Outline and Structure



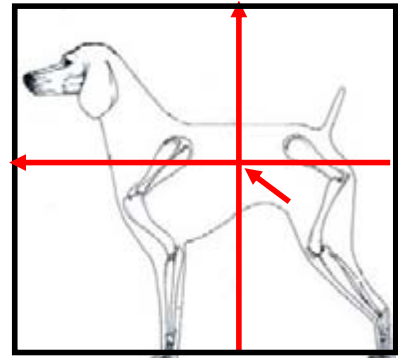
Look at the entire dog, find the middle and from there divide dog into halves. Make sure both masses compare. (Balance).

Exact comparison of both side Symmetry).



Step 1.

Locate middle of the dog when viewing from the side. Both form top to bottom and end to end.



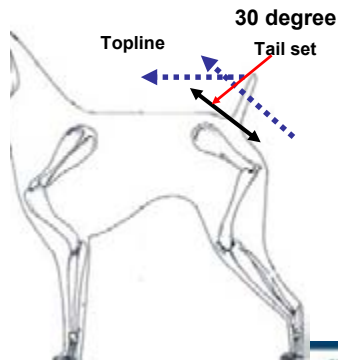
Step 2.

Cut in tail-set at a 30 degree angle

Step 3.

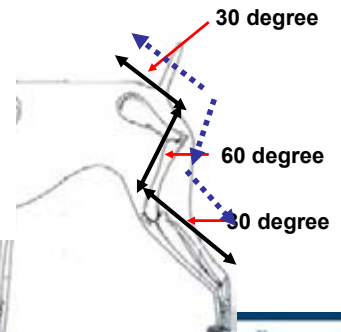
Set top line

Most breeds are should be level



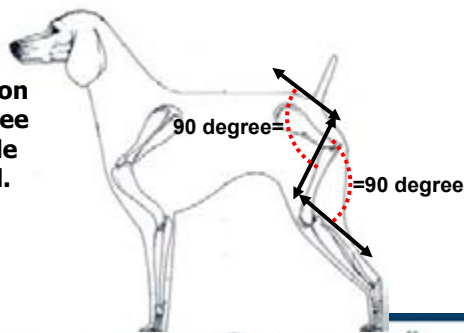
Step 4. Set rear assembly angles

Remember, when scissoring, to point scissors in the direction the hair is to go. (straight)



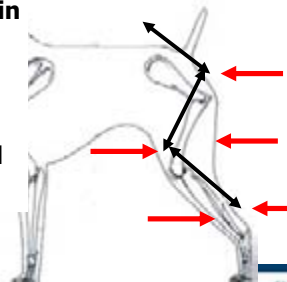
At each conjunction a 90 degree right angle is created.

In the perfect world©

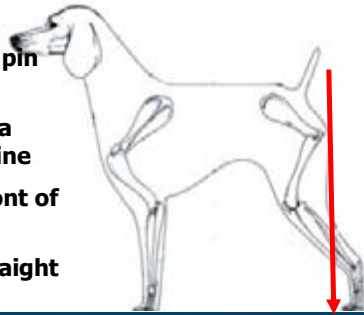


Visually the tightest point will be located in the bend

Visually the greatest points will be located at the points

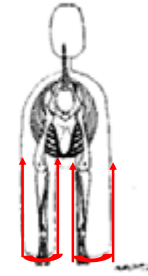


From the pin bone  
In vision a straight line  
To the front of toes  
Hocks straight

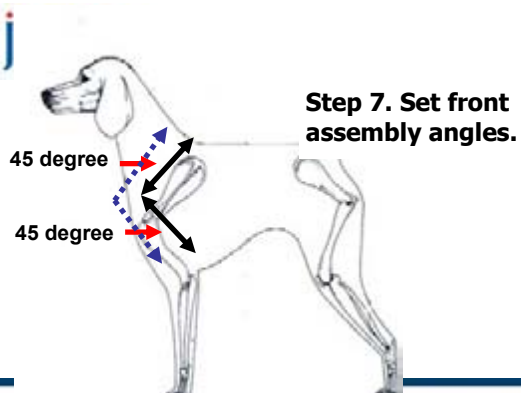


Step 5. Set rear assembly angles on the parallel, inside and outside.

(When viewing from rear, legs should be straight, parallel balanced and symmetrical)

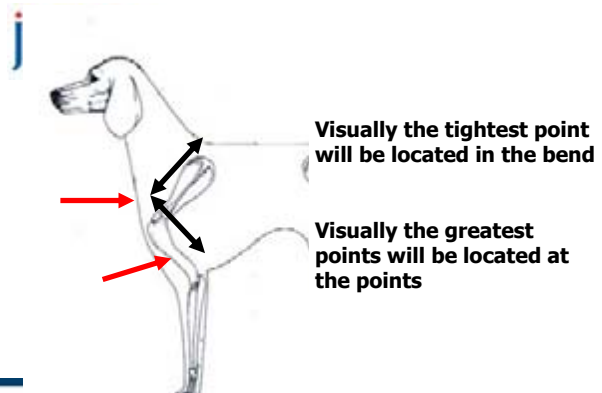


Step 6. Bevel bottom of rear legs or trim feet.



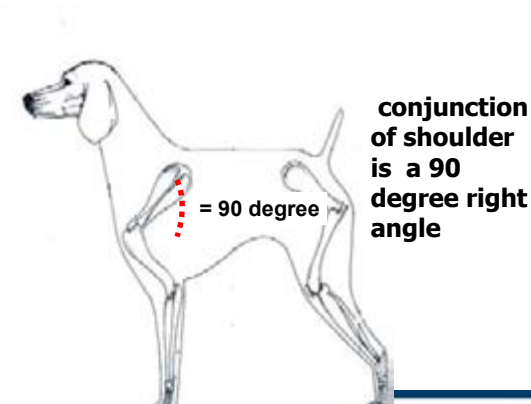
Step 7. Set front assembly angles.

45 degree  
45 degree



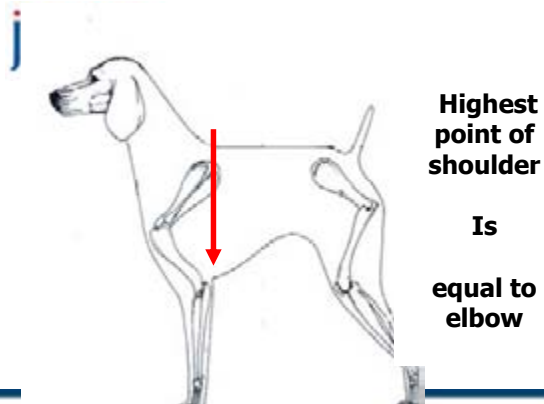
Visually the tightest point will be located in the bend

Visually the greatest points will be located at the points



conjunction of shoulder is a 90 degree right angle

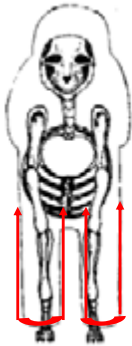
= 90 degree



Highest point of shoulder

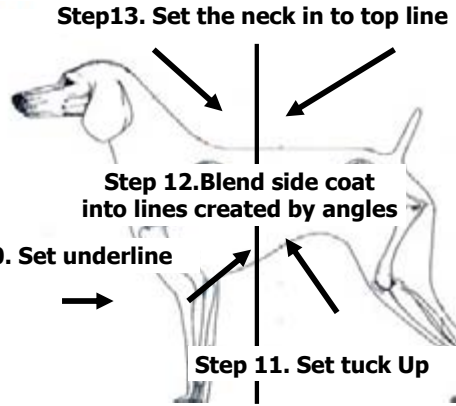
Is equal to elbow





**Step 8. Cut in parallel lines on inside and out-side front legs**  
(Lay back of shoulder)

**Step 9. Bevel front legs or trim feet.**



**Step 13. Set the neck in to top line**

**Step 12. Blend side coat into lines created by angles**

**Step 10. Set underline**

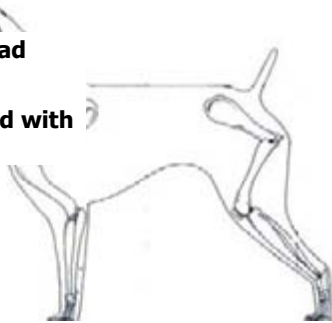
**Step 11. Set tuck Up**



**Step. 15 Shape tail to balance with head and body**

**Step 14. Set top-knot or head coat into neck**

(make sure head is balanced with body)



**Remember: you want a continuous line so the eye can follow the natural outline of the dog.**



**Step away from your dog and look!**

**Profile**

**Front and rear parallels**

**Over view!**

