

NEW! DK AirMax XStream Dryer

Highly effective dryer features a unique discharge air filtration system that filters out carbon dust and other contaminants, eliminating unsightly black spots on freshly washed coats. Remarkably quiet design offers tremendous velocity, volume, and value.

The Double K™ ChallengAir Airmax XStream Dryer features two twin-turbine motor/fan assemblies mounted in noise- and vibration-dampening enclosures. The clamshell polyethylene housing provides easy access to motors and components for brush changes and servicing, and is impact-resistant, rust- and dent-proof. Hose mounts to the dryer with a convenient half-twist motion. Includes multiple nozzles.

- Air Volume: 266 CFM Heat: Warm Air
- Amps: 14 / Watts: 1,485 / Volts: 115
- Warranty: Manufacturer's Two Year
- Weight: 21 lbs

Item#	Description	Price
BD02500	AIRMAX XStream Dryer	\$455.95 (F.O.B)



Model 9000 Stand Dryer

FEATURES:

- Adjustable height stand with gas assisted spring.
- Powerful 260cfm air flow.
- Variable airflow.
- Adjustable heat settings.
- Easy to clean filter.
- Stable 5 leg base.
- Brushless motor!
- Quiet, dependable operation!
- 2 Year warranty.



Item#	Description	Price
BD09000	Model 9000 Dryer (F.O.B.)	\$589.99

Optional Accessory Kit

Kit Includes:

- 6 ft Hose.
- Cage Diffuser.
- 3 Nozzles.
- 2 Hose-to-Cage Attachments.



Item#	Description	Price
BD09000K	Hose and Nozzle Kit	\$119.95



Challengair 560 Cage Dryer

FEATURES:

- 'No Maintenance' Brushless motor - requires no brush changes.
- Helps protect animals from the risk of hyperthermia (overheating) or hypothermia (chilling) - A thermistor, located in the small well beneath the grate, is part of a control system that measures the temperature in the cage and prevents the cage temperature from exceeding approximately 107°, greatly reducing the risk of animal discomfort or harm.
- 3.70% more airflow than any other cage dryer! (750 CFM)
- Quiet Operation - The quietest cage dryer on the market.
- 60 minute safety timer.
- Versatile settings including two air volume and heat adjustments.
- Air filtration on both air inlets keeps fan and internal parts clean.
- Two year limited warranty.
- Fits most standard veterinary and grooming cages.



Item#	Description	Price
BD0560	ChallengAir 560 Cage Dryer	\$459.99

Airmax Dryer



FEATURES:

- Two speed operation.
- Two Powerful Motors - 133 CFM per motor = 266 CFM total! Produces more air due to the aerodynamic housing design and a smooth hose lining (less ridges inside the hose) reducing resistance of air through the hose, increasing the air volume.
- Twist on nozzles to the hoses to prevent "pop-off" that can occur with other forced air dryers.
- Includes 3 versatile attachments for any drying need, including the unique "air sweep nozzle" for pushing water from the animal's coat!
- Crushproof heat resistant hose.
- Housing is virtually indestructible and will not rust, dent or crack as metal housings can.
- Two year limited warranty.

Item#	Description	Price
BD02200	AIRMAX Dryer	\$359.99
BD02200H	6' Replacement Hose	\$25.00

2000 A.D. XL Forced Air Dryer



Unique "air sweep" nozzle is specially designed to blow water out of the coat in sheets!

FEATURES:

- Two speed operation.
- Powerful 3 HP blower.
- 118 CFM air volume. Produces more air due to the aerodynamic housing design and a smooth hose lining (less ridges inside the hose) reducing resistance of air through the hose, increasing the air volume.
- Twist on nozzles to the hoses to prevent "pop-off".
- Includes 6 ft. hose and 4 versatile attachments for any drying need, including the unique "air sweep nozzle" for pushing water from the animal's coat!
- Due to it's polyethylene housing, it is significantly quieter than dryers with aluminum or metal housings. The motor is acoustically isolated from the housing with "iso-dampeners" mounted between the motor and housing.
- Virtually indestructible housing will not rust, dent or crack as metal housings can.
- Two year limited warranty.

Item#	Description	Price
BD02000	ChallengAir 2000 A.D. XL Dryer	\$239.95
BDP02000H	6' Replacement Hose	\$25.00

DRYERS • • • • • DOUBLE K BLOW DRYERS

Air Force Commander Dryer



GROOMS MORE DOGS IN LESS TIME ... MAKING YOU MORE MONEY!

A powerful floor/table dryer with two-speed performance, allowing you to groom large or small breeds with one dryer! This lightweight dryer is so powerful you will forget it's portable. Features include an easy change filter and dual mounted legs that allow the Commander to be used vertically or horizontally. You'll particularly like the job it does on heavy coated breeds. It dries their hair without drying their coats.

Item#	Description	Price
BD024	Metro AFTD2 (2 peak HP) (100CFM @ 23,000FPM at high speed) (50CFM @ 11,500FPM at low speed)	\$199.95
BD025	Metro AFTD3 (4 peak HP) (130CFM @ 28,000FPM at high speed) (65CFM @ 14,000FPM at low speed)	\$234.95
BD027	Cage Dryer Kit	\$14.99
BD036	Repl. Hose	\$19.95
BD038	Repl. Filters, 3 pk.	\$8.15

Optional Cage Dryer Kit

Kit Includes:
2 handle holders,
2 1/2"x3" cage attachment w/ "S" hooks.



'Quick Draw' Compact Dryer



MADE IN USA the AIR FORCE QUICK DRAW is a compact, powerful hand held pet dryer that is small enough to take on the road yet strong enough to use in the shop to dry off a large long haired dog in minutes! At just over 3 pounds the compact all steel QUICK DRAW produces a large volume of warm air to dry all pets quickly and thoroughly.

SPECIFICATIONS:

- 1.3. Peak HP motor.
- 160 MPH / 85 CFM • 18,000 FPM
- 8 Amps, 120 Volts, 950 Watts.
- All steel construction.

Item#	Description	Price
BD050	'Quick Draw' Compact Dryer	\$115.95



Metro 'Blaster' Dryer



Cut drying time by as much as 75%. Just flip the switch and this high-speed dryer to literally "blast" water off the wettest dogs, faster and more efficiently. Pound for pound, dollar for dollar, it is the most powerful dryer available today. It has no heating element so it can dry even heavy-coated dogs without drying out their coats. The metro blaster dryer is powerful, fast and affordable!

- 1 motor (4 peak Horse Power)
- 9.5 amps, 29,500 FPM

Item#	Description	Price
BD040	'Blaster' Dryer	\$269.95
BD041- Hose	Replacement Hose	\$38.95
BD045	Replace Nozzle	\$9.95



'Top Gun' Stand Dryer



The Air Force 'Top Gun' stand dryer is designed to make drying easier and faster. With the optional hose and bracket kit it can easily be converted into a forced air dryer, or cage dryer. Unbreakable 'incoloy' heating element with solid state variable temperature control allows you to vary the air temperature from 80o to 122°F.

FEATURES:

- 5 leg, no-tip base with casters.
- Adjustable height (39" to 57")
- Variable temperature control.
- E-Z change filter.
- Powerful 4 horsepower, 2 speed motor.

Item#	Description	Price
BD032	Top Gun Dryer (F.O.B.)	\$439.95
BD035	Cage Dryer Kit	\$46.95

NEW! 'Twin Turbo' Dryer



Turbo charge your grooming salon with the Air Force Twin Turbo Super High Velocity Dryer. The Air Force Twin Turbo Dryer features two speeds and is powered by two 26,370 RPM motor turbines that deliver 61,000 FPM of air flow. Includes: 10' foot heavy duty hose, heavy duty blower nozzle and air flare.

SPECIFICATIONS:

Air Volume/Speed: 245 CFM / 61,000FPM
Watts/Amps/Volts: 2160 / 18 / 120V

Item#	Description	Price
BD055	'Twin Turbo' Dryer	\$559.95 (F.O.B.)

Metro 'FlexDri' Dryer

Powerful, FLEXDRI allows hands free grooming. Airflow is easily positioned where it is needed. Easily mounts to most table tops using built-in universal alligator clamp.



SPECIFICATIONS:

- Watts/Amps/Volts: 500 / 1.73 / 120V
- 3/4 horsepower
- 25 cubic feet per minute.
- 10,000 feet per minute.

BD010	Metro Air Force FLEXDRI	\$85.00
-------	-------------------------	---------

NEW MODEL DOUBLE THE POWER!

Edemco Stand Dryers



Model F7001 Stand Dryer

FEATURES

- One fan cooled brushless 1/4 Horse power motor.
- 3500 - 9600 FPM. • 107 - 250 CFM.
- 115/120 Volts. • 15 Amps.
- Air temperature: 72 - 145°F.
- Air flow control : mechanical.
- Unbreakable calrod 1900 watt.
- Six leg 39" - 57" adjustable height.
- Nozzel: neoprene swivel nozzle, rotates 360 degrees.
- Thermal overload cutoff.
- Heat control: solid state variable heat control.
- Cast aluminum/steel housing.
- 8' Heavy-duty grounded cord.

7 YEAR LIMITED WARRANTY



Item#	Description	Price
BD7001	Model F7001 Stand Dryer (F.O.B)	\$795.99

Model F3002 Stand Dryer

FEATURES

- 1/16 Horse power motor.
- 3500 FPM. • 107 CFM.
- 115/120 Volts. • 15 Amps.
- Air Temperature: 72 to 155°F.
- Unbreakable tubular calrod 1900 Watt heating element.
- Four leg 39" - 57" adjustable height.
- Neoprene swivel nozzle, rotates 360 degrees.
- Solid State variable heat control.
- Cast aluminum/steel housing.
- Thermal overload cutoff.
- 8' heavy-duty grounded cord.

7 YEAR LIMITED WARRANTY



Item#	Description	Price
BD3002	Mdl. F3002 Stand Dryer (F.O.B)	\$555.99

Model F160 'Best 'N' Show' Portable Stand Dryer

FEATURES

- 1.5 horse power motor.
- 19,000 FPM. • 99 CFM.
- 115/120 Volts. • 15 Amps.
- Air Temperature: 95 to 145°F.
- Unbreakable Mica 700 watt heating element.
- Three leg adjustable height, chrome-plated.
- Neoprene swivel nozzle, ABS 180 degrees.
- Cast aluminum/steel housing.
- 8' heavy-duty grounded cord.

7 YEAR LIMITED WARRANTY



Item#	Description	Price
BD160	F160 Stand Dryer (F.O.B)	\$299.95
BD170	Hose Kit	\$72.99
BD165	BNS Carbon Brushes (pair)	\$28.25

K-9 Dryers



K-9 I Dryer

- Portable, lightweight. More drying power.
- 42,750 ft/min airflow @ 115 CFM.
- Power requirements; 120volts, 14.85amps.
- Powered by 2 - 18,500 rpm motor turbines.
- Choice of 2 speeds.
- Choice of 2 temperatures.

- 18 gauge steel body.
- CSA approved.

Item#	Description	Price
BD203	K-9 I Dryer (FOB)	\$549.95

K-9 II Dryer

- Perfect for long dense coats.
- 58,329 ft/min airflow @ 123 CFM.
- Power requirements: 120 volt, 17 amps.
- Powered by 2 - 22,500 rpm motor turbines.
- Plenty of power to dry two dogs at once.
- Choice of 2 speeds.
- Choice of 2 temperatures.

- Makes an efficient cage dryer.
- CSA approved.

Item#	Description	Price
BD204	K-9 II Dryer (FOB)	\$599.95



K-9 III Dryer

- 60,921 ft/min airflow @ 245 CFM.
- Power requirements: 120 volt, 19.5 amps.
- Plenty of power to dry two dogs at once.
- Choice of 2 speeds.
- Choice of 2 temperatures.
- Makes an efficient cage dryer.

- 18 gauge steel body.
- Not CSA approved.

Item#	Description	Price
BD2043	K-9 III Dryer (FOB)	\$619.95

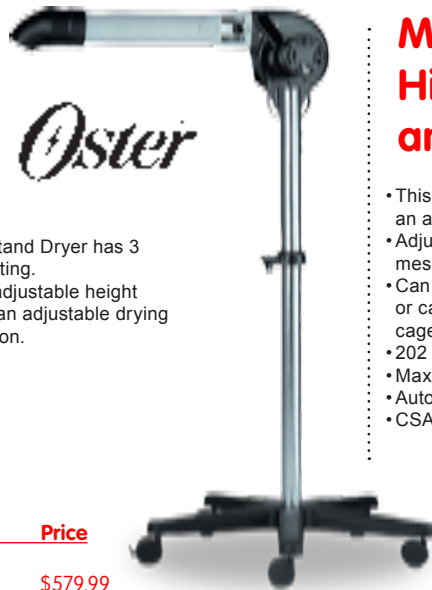
K-9 Dryer optional accessories:

Item#	Description	Price
BD209	K-9 I Motor Brush(pair)	\$17.95
BD210	K-9 II Motor Brush(pair)	\$17.95
BD211	K-9 III Motor Brush(pair)	\$17.95
BD220	K-9 I,II,III (Intake Filters)	\$7.95
A.	Extra 10 ft. hose for use on double end cap.	
BD205	10 ft. hose	\$59.95
B.	Blower Tip - Can be trimmed to adjust air flow.	
BD206	Blower Tip	\$8.95
C.	Blower 'Y' End Cap for 2 hose use.	
BD207	Blower 'Y' End Cap	\$27.95



DRYERS • • • • • EDEMCO AND K-9 STAND & BLOW DRYERS

Model 309-61 Hi-Velocity Stand Dryer



- The model 309-61 Hi-Velocity Stand Dryer has 3 heat settings plus an air only setting.
- Also features a spring assisted adjustable height stand with 5 leg base. Provides an adjustable drying angle with it's 360o nozzle rotation.
- Fine mesh air intake screen.
- 177 CFM @ 3696 FPM of air.
- Maximum wattage is 1680.
- Automatic over-heat protection.
- CSA approved.

Item#	Description	Price
BD309	Model 309-61 Stand Dryer (F.O.B.)	\$579.99

Model 304-61 Hi-Velocity Cage and Table Dryer



- This dryer has 3 heat settings plus an air only setting.
- Adjustable drying angle and a fine mesh air intake screen.
- Can be mounted on a flat table top, or can be hung on the side of a cage by its vinyl coated feet.
- 202 CFM @ 3757 FPM of air.
- Maximum wattage is 1680.
- Automatic over-heat protection.
- CSA approved.

Item#	Description	Price
BD304	Model 304-61 Cage and Table Dryer	\$319.99

DRI-EAZ 'Sahara' Turbo Dryer



7 YEAR LIMITED WARRANTY

Multi-Cage Adapter Kit

Utilizes a large volume of room temperature air, resulting in a safe, cost efficient way to dry. Pet is not exposed to high temperature levels, reducing the possibility of dehydration.

FEATURES:

- Dries pets fast without overheating.
- Low power consumption - Saves you money!
- Reduces static for fluff drying coats.
- Long-lasting industrial quality construction.
- Ultra-quiet operation reduces hearing loss.
- Low Maintenance - no brushes/filters to replace.
- 3-speeds, 1 HP motor, high volume & pressure.
- Ideal for use with Multi-Cage Adapter Kit.
- C-UL Approved.

Item#	Description	Price
BD403	Sahara HP	\$499.95 (F.O.B.)
BD405	Sahara HP Multi-Cage Adapter Kit	\$299.95

Multi-Cage Adapter Kit Combo

3 high volume hoses with individual flow control for drying up to 3 cages at once. For use on Sahara HP Dryer only.

Item#	Description	Price
BD407	Sahara/Adapter Combo	\$768.95 (F.O.B.)

NEW! Chris Christensen 'Kool Dry' Hi-Velocity Blow Dryer



Discontinued

Sound absorbing foam throughout the housing makes it the quietest dryer in the industry. 'Smart Start' technology starts with 2 to 3 amps and peaks at a full speed at 9/6 amps. 200 options of air flow to allow for perfect air flow for detailed grooming on critical parts.

FEATURES:

- Versatile: Low velocity for detail work. High velocity to blow water out.
- Easy to use attachments for different breeds.
- Low electrical draw to not trip breakers.
- Trouble free - low maintenance.
- Includes: one 10 foot 1 1/2" hose, concentrator nozzle, and flat nozzle.
- Light weight and compact.
- Durable polyethylene case.
- One Year Manufacturer's Warranty.

The Kool Dry Dryer is available in 4 colours. Blue (BL), Lime Green (GN), Purple (PR), and Pink (PK)
Please add colour code to end of Item# (ie: BD4000BL)

Item#	Description	Price
BD4000	'Kool Dry' Dryer	\$395.00

Andis 'Quiet Aire' Ionic/Ceramic Pet Dryer



Features ionic and ceramic technology. It is much quieter than traditional hair dryers and its hands-free dryer stand offers a five-position tilt adjustment to dry any size dog in a matter of minutes.

Additional features include: four heat settings, three air speeds, cool shot button, removable air intake filter for easy cleaning, and 6' cord. ETL approved.

Item#	Description	Price
BD071	Ionic/Ceramic Dryer	\$34.95

NEW! Chris Christensen 'Hold A Hose'



The 'Hold-A-Hose' Assembly

A flexible arm that attaches to any grooming table with a clamp, and with easy release cable, allowing for hands free drying of your pet.

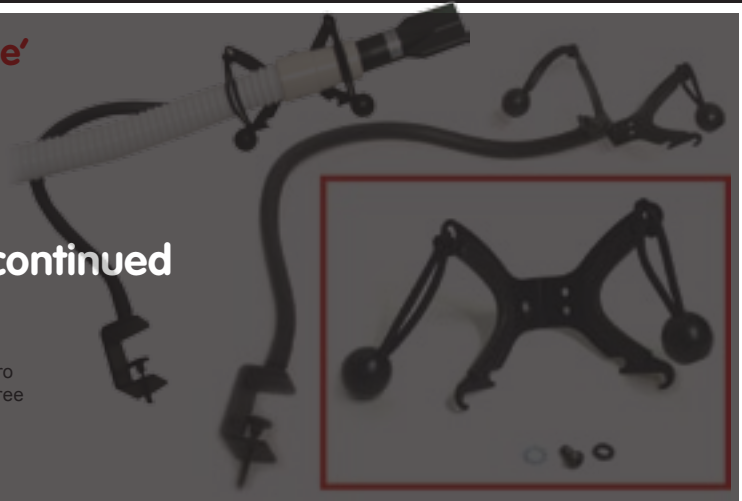
Item#	Size	Price
BD4004	'Hold-A-Hose' w/ Retro Fit Head	\$87.50

Discontinued

'Hold A Hose' Retro Fit Head

Can be used to convert the original "Hold a Hose Assembly" into the "Retro Fit Hold a Hose Assembly." Will clamp on to any table to allow for hands free work and the hose can easily be released from the cradle.

Item#	Size	Price
BD4006	'Hold-A-Hose' Retro Fit Head	\$28.50



**Metro's
The 'Groomers Third Arm'**



- Leaves hands free to get on with brushing, combing, etc.
- The flexible arm clamps on to most table tops.
- Use to hold a hand-held dryer, or direct the hose from a hi-velocity dryer.

Item#	Description	Price
BD049	Third Arm	\$31.95



Cage/Crate Cooling Fan



Battery powered fan easily hangs on a cage, pen or sits on a table. Provides a steady, gentle breeze to keep pets cool.

Uses 2'D' batteries (not included) or can be used with an AC adapter (not included).

Item#	Description	Price
BD001	Cage Fan	\$13.79



**Replacement
Dryer Parts**



Item#	Description	Price
1. BD029	Metro 2 Speed Switch	\$11.95
2. BD033-4	Metro Brushes, 4HP, 2sp/1HP, 1sp (ABC-14)	\$22.70
3. BD034	Metro Concentrator Nozzle	\$8.15
4. BD309EL	Oster Heating Element, for Mdl. 304/309	\$69.95
5. BD312	Oster Rotary Switch for Mdl. 304/309	\$18.95
6. BD314	Oster Knob for Rotary Switch	\$4.95
7. BDPK10075	DK Mod. 2000-xl Repl. Brushes (2pc)	\$22.70
8. BDPK2006A	Model 2000 3-Position Rock Switch w/ Wire Assembly	\$27.70
9. BDPK7021	DK Heating Element for 9000	\$59.95
10. BDPK815	DK Carbon Brushes for 2000AD	\$25.65
11. BDPK868	DK ChallengAir Motor Filter	\$11.75
12. BDPK9025	DK Model 9000 Repl. Brushes (2pc)	\$17.25

DRYERS ••••• DRYER ACCESSORIES AND PARTS