

Geib - Premium Quality Buttercut Shears

Since 1980 Ed Geib has been making premium quality shears for the pet grooming industry. Ed has made a point of asking groomers what features they want in their shears and has applied their feedback to his ever evolving designs. The Geib name is synonymous with the finest quality grooming shears available. Every pair of Geib shears are finished, inspected and tested by a Geib Craftsman before it can leave the factory.

1. "Gator" Entry Level Shears

Forged from high grade stainless steel and hand finished to an ultra smooth razor sharp edge. Lightweight and well balanced for maximum comfort.

Item#	Description	Price
HS31750	7.5", Straight	\$58.95
HS31750C	7.5", Curved	\$63.95
HS31850	8.5", Straight	\$67.50
HS31850C	8.5", Curved	\$71.95
HS31910	10", Straight	\$79.95
HS31850L	8.5", Straight (left handed)	\$79.95



"Gator" Entry Level Shears

2. "Gator" Blending Shears

High quality, economically priced blenders with ergonomic handles and adjustable tension control knob.

Item#	Description	Price
HS31030	6.5", 30 Tooth	\$76.95
HS31040	6.5", 40 tooth	\$79.95



"Gator" Blending Shears

3. "Super Gator" Ergo Design Shears

Specially designed handles with bent, teardrop thumb-ring and adjustable tension control knob.

Item#	Description	Price
HS36075	7.5", Straight	\$159.95
HS36075C	7.5", Curved	\$172.95
HS36085	8.5", Straight	\$172.95
HS36085C	8.5", Curved	\$178.95
HS36910	10", Straight	\$179.95



"Super Gator" Ergo Design Shears

Ergo design features tear drop shaped, angled thumb hole with removeable insert rings.

4. "Entrée" Shears

Our choice for the best value and performance. Budget priced and full featured. Ergonomic offset handles for maximum comfort, convex cutting edge for maximum cutting efficiency, blades fabricated from stainless steel and cobalt alloy for maximum cutting edge life, adjustable tension control knob. Each pair comes with its own deluxe storage case.

Item#	Description	Price
HS37175	7.5", Straight	\$72.95
HS37175C	7.5", Curved	\$72.95
HS37185	8.5", Straight	\$72.95
HS37185C	8.5", Curved	\$72.95
HS37195	9.5", Straight	\$72.95
HS37195C	9.5", Curved	\$72.95

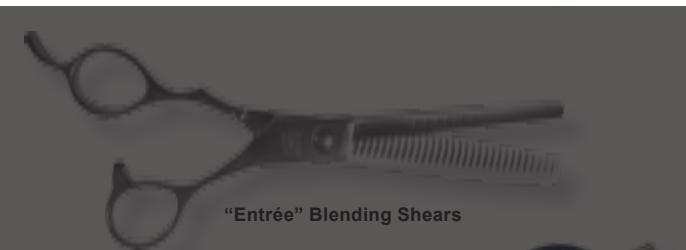


"Entrée" Shears

5. "Entrée" Blending Shears

An ergonomic design with all of the above features make this an excellent choice in blending shears.

Item#	Description	Price
HS37330	6", 30 Tooth	\$96.95
HS37340	6", 40 tooth	\$96.95



"Entrée" Blending Shears

6. **NEW** Discontinued Premium Shears

Blue Titan shears are titanium coated, fine blade finishing scissors with a short shaped shank for easy operation. Double removable finger rests, comfort inserts, and a ball bearing pivot.

Item#	Description	Price
HS37350	7", Straight	\$96.95
HS37351	7", Curved	\$99.95
HS37360	8", Straight	\$109.95
HS37361	8", Curved	\$119.95



Discontinued

"Entrée" 'Blue Titan' Shears

GEIB LIFETIME GUARANTEE

Mr. Geib guarantees these shears are of outstanding quality. The latest state-of-the-art technology and materials are employed in their production. This guarantee includes our unique "Lifetime" warranty on all parts, materials and workmanship. Our customers can be assured of cheerful repair or replacement should the occasion arise. NOTE: Warranty is void if our shears are serviced by any other than Buttercut Factory Honing Service.

Cazman Masterpiece Premium Grooming Shears

All Cazman 'Masterpiece' Premium Grooming Shears are forged from high-grade, ice-tempered 440 stainless steel and polished to a high gloss finish. Concave/concave, or semi-oval blades provide a superior cut with a razor sharp, long lasting cutting edge!

'Masterpiece' Convex, 8-1/2 Triple Ring Shears

Unique Triple Ring ergonomic design, insures maximum scissor control, maximum comfort and minimum stress, reducing the risk of developing Carpal Tunnel symptoms and cramped fingers. One-click micro-adjusting dial allows you to set the blade tension to your perfect comfort level. Available in straight or curved blade models. Overall length is 8.5". Length of cut is 4".

Stock#	Description	Price
HS002385S	8.5" Triple Ring, Straight	\$95.00
HS002385C	8.5" Triple Ring, Curved	\$99.00

Triple Ring Shears



'Masterpiece' Slim-Line Shear

Lightweight, ergo design, short shank shears relieve strain from the hand and wrist. Razor sharp semi-oval cutting edge slices through thick coats with ease. Available in 7.5" and 8.5" straight and curved models.

Stock#	Description	Price
HS002175S	7.5" Ergolite, Straight	\$82.99
HS002175C	7.5" Ergolite, Curved	\$84.99
HS002185S	8.5" Ergolite, Straight	\$87.00
HS002185C	8.5" Ergolite, Curved	\$89.00

Slim-Line Shears

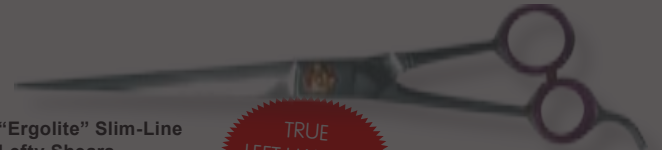


'Masterpiece' "Ergolite" Slim-Line Lefty Shear

A true left-handed shear featuring razor sharp convex/concave blades, micro-dial tension control knob and an ergonomic short shank design. The ultimate shear for left-handed groomers. Available with straight or curved blades. 8.5" long.

Stock#	Description	Price
HS002985S	8.5" Ergolite Lefty, Straight	\$109.95
HS002985C	8.5" Ergolite Lefty, Curved	\$114.95

"Ergolite" Slim-Line Lefty Shears



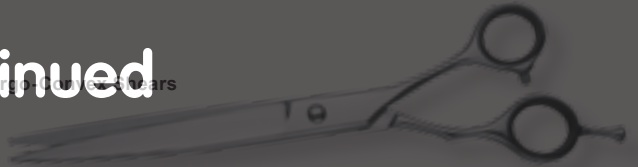
TRUE LEFT-HANDED DESIGN!

'Masterpiece' 8-1/2 Ergo-Convex Shears

Lightweight, ergonomic design makes this shear an absolute pleasure to use. Forged from the highest quality 440C stainless steel. Cuts hair like a hot knife through butter. Available in straight or curved blade models. Adjustable tension control knob and short shank.

Stock#	Description	Price
HS002485S	8.5" Ergo-Convex, Straight	\$69.00
HS002485C	8.5" Ergo-Convex, Curved	\$74.00

Discontinued



Ergo Thinner

'Masterpiece' Ergo Convex Thinners

Features razor sharp convex cutting edge made from the finest quality, high grade 440C stainless steel, and an ergonomic design. Adjustable tension control knob and precision V-notched cutting teeth for maximum cutting efficiency.

Stock#	Description	Price
HS002456	6.75", 56 Tooth, Ergo Thinner	\$99.95



Cazman Masterpiece Shear Sets

cazman

Ergo Convex Shear Set

Ergo Convex Shear Set

- Comes complete with:
- 6.75", 56 Tooth Ergo Convex Thinner
 - 8.5", Straight Ergo Convex Shear
 - 8.5" Curved Ergo Convex Shear

SAVE \$67.96 over purchasing all shears separately!

Item#	Description	Price
HS00298	Ergo Convex Shear Set	\$225.99 (SAVE \$67.96)

Slim Line Shear Set

Slim Line Shear Set

- Comes complete with:
- 6.75", 56 Tooth Ergo Convex Thinner
 - 7.5", Straight Slim Line Ergolite Shear
 - 8.5", Straight Slim Line Ergolite Shear

SAVE \$63.99 over purchasing all shears separately!

Item#	Description	Price
HS00299	Slim Line Shear Set	\$205.95 (SAVE \$63.99)

Cazman Protégé Grooming Shears



Protégé 6" Ergo Shear

Razor sharp convex cutting edge, adjustable tension control dial, stainless steel construction and ergonomic offset handles for minimum stress to hands and wrist.

Stock#	Description	Price
HS004411	6" Ergo Shear	\$59.99

Protégé 8" Econo Shears

Razor sharp beveled cutting edge, adjustable tension control dial, removable finger rest and heavy duty satin finish stainless steel construction.

Stock#	Description	Price
HS004410	NEW 5.5" Econo Shear	\$24.95
HS004600	8" Econo Shear	\$34.99
HS004510	NEW 28 Tooth Econo Thinner	\$26.95

NEW! Protégé Razor Sharp Shears

Razor sharp convex cutting edge, adjustable tension control dial, stainless steel construction and ergonomic offset handles for minimum stress to hands and wrist.

Stock#	Description	Price
HS004422	5.5" Razor Sharp Shear	\$49.95
HS004482	7" Razor Sharp Shear	\$52.95

Protégé 6" 38 Tooth Thinning Shears

High grade stainless steel construction, offset handle design, adjustable tension control knob and removable finger rest.

Stock#	Description	Price
HS004512	38 Tooth Thinner	\$49.99

6" Thinner

6" Ergo Shear

8" Econo Shear

5.5" Econo Shear

6" Econo Thinner

7" Stay Sharp Shear

Cazman Protégé Shear Sets

IDEAL FOR GROOMING SHOPS!



Protégé Razor Sharp Shear Set

Protégé Razor Sharp Shear Set

Comes complete with:
 • 5.5" Razor Sharp Shear
 • 7" Razor Sharp Shear

SAVE \$14.95
 over purchasing all shears separately!

Item#	Description	Price
HS00296	Razor Sharp Shear Set	\$87.95 (SAVE \$14.95)

Protégé Econo Shear Set

Protégé Econo Shear Set

Comes complete with:
 • 5.5" Econo Shear
 • 8" Econo Shear
 • 6" 28 Tooth Econo Thinner

SAVE \$13.94
 over purchasing all shears separately!

Item#	Description	Price
HS00297	Econo Shear Set	\$72.95 (SAVE \$13.94)

SCISSORS AND ACCESSORIES • • • • • CAZMAN PROTEGE SHEARS



DubIDuck from Millers Forge Finest Quality Hand Crafted

Handmade craftsmanship goes into every DubIDuck shear providing the ultimate in smooth dependable performance. Long lasting hollow ground, ice-tempered stainless steel blades ensure superior cutting action.

QUALITY SHEARS AT AFFORDABLE PRICES!

SCISSORS AND ACCESSORIES MILLERS FORGE SHEARS

1. Mercedes 88ss. 8 1/4" Filipino style shear.

Finest quality German craftsmanship. A real workhorse, ice tempered stainless steel blades.

Item#	Description	Price
HS1688	Mercedes 88, Straight	\$89.95



1.

2. Heavy Duty 8 1/4" Filipino 88 Shears.

Ice-tempered stainless steel for long life.

Item#	Description	Price
HS1620	8 1/4", Straight	\$31.95
HS1622	8 1/4", Curved	\$32.95



2.

3. Wonderedge Ice-tempered Shears.

Fine quality German construction. Available in 3 lengths.

Item#	Description	Price
HS1670	7", Straight	\$61.95
HS1675	7-1/2", Straight	\$62.95
HS1678	8", Straight	\$64.95



3a.

4. Mercedes 7 1/2" Stainless Shears.

Finest quality German craftsmanship. Lightweight. Available straight or curved.

Item#	Description	Price
HS1685	7 1/2", Straight	\$79.95
HS1686	7 1/2", Curved	\$81.95



3b.

5. "Big Ten" Heavy Duty 10" Shears.

Ice-tempered stainless steel for long life.

Item#	Description	Price
HS1690	10", Straight	\$35.95
HS1695	10", Curved	\$36.95



3c.

6. Curved Grooming Shears.

Stainless steel construction. Available with or without safety ball tip.

Item#	Description	Price
HS1611	6 1/2" w/ Safety Tip	\$49.95
HS1612	6 1/2" Beau Brummel	\$48.95



4.

7. Left Handed Shear.

Item#	Description	Price
HS1679	Discontinued	\$59.95



6a.

6b.

8. Ear & Nose Trimmers.

4" long. Straight or curved. Safety tip.

Item#	Description	Price
HS1682	4", Curved	\$29.95
HS1683	4", Straight	\$29.95



5.



8.

7.

"Ultra Gold" Premium Shears

1. Slim Style Lightweight Shears.

Available in 6 1/2" & 7 1/2" long models. Removable finger rest.

Item#	Description	Price
HS1965	6 1/2", Straight	\$85.95
HS1975	7 1/2", Straight	\$89.95



1.

2.

3.

2. Filipino 88 Style

Heavy Duty Shear. Smooth operation with razor sharp cutting edge. 8 1/2" long. With fixed finger rest.

Item#	Description	Price
HS1988	8 1/2", Straight	\$99.95

3. Thinning Shears.

A notably superior thinner when only the best will do. Available in 30 or 46 tooth configuration.

Item#	Description	Price
HS1930	30 Tooth Thinner	\$98.95
HS1946	46 Tooth Thinner	\$99.95

Skipper Thinning Shear



Medium weight pattern with finger rest. Thinner has 30 or 46 teeth, single or double blade.

Item#	Description	Price
HS1646	46 Tooth single	\$67.95
HS1642	30 Tooth double	\$67.95

Duchess Thinning Shear



Shears with 30 or 46 teeth, single or double blade and finger rest.

Item#	Description	Price
HS1630	30 Tooth single	\$49.95
HS1636	46 Tooth single	\$49.95

'Featherlight' Grooming Shears



Made from high quality, ice tempered stainless steel for a long lasting surgical cut. Attention to design details reduce hand fatigue with an ergonomically balanced, light-weight shear. These super-smooth shears also feature a tiny impact absorber that cushions cutting action. Adjustable tension allows customized action for every user. Beautifully finished with gold handles and individually packaged with their own leather-like protective sheath.

- Professional groomer quality.
- Ice tempered stainless steel.
- German technology.
- Surgically sharp.
- Adjustable tension.
- Light weight.
- Protective sheath.
- Lifetime guarantee!

Item#	Description	Price
1. HS7080	10" Filipino, Straight	\$32.95
2. HS7040	8" Filipino, Straight	\$30.95
3. HS7060	7-1/2", Straight	\$21.95
4. HS7030	6-1/2" Curved Shear	\$22.95
5. HS7010	6-1/2" Thinning Shear, 30 Tooth	\$20.95
6. HS7020	4" Ball Tip Shear, Curved	\$9.95
7. HS7055	5 1/2", Straight	\$19.95

Professional 5-1/2" Shorty Thinning Shear



5-1/2" thinner made from Ice-tempered stainless steel. Excellent for precision blending.

Item#	Description	Price
HS7192	Shorty Thinning Shears	\$65.95



'Black Beauty' Compact Blending Shear

Finest quality German made compact shears. Carbon steel finished in black anodizing. Great for touch ups, finish blending and cutting in delicate, tricky areas. A favourite at dog shows!

Discontinued

Item#	Description	Price
HS560	5.5", Fine Tooth Thinner	\$57.95

Heritage 'Pet' Grooming Shears



All Heritage shears feature a lifetime free sharpening guarantee. If anything goes wrong under normal use, Heritage will repair or replace it at no cost to you. If you scissors become dull for any reason, Heritage will resharpen them free of charge excluding postage to and from their factory near Buffalo, NY.

Heritage D-71/2 Grooming Shears

7.5" all purpose shear available with straight or curved blades.

Item#	Description	Price
HS00575S	7.5", Straight	\$61.99
HS00575C	7.5", Curved	\$61.99

Heritage D-88 Filipino Style

8.5" filipino style shears for heavy duty cutting jobs. Available in straight or curved blades.

Item#	Description	Price
HS00588S	8.5", Straight	\$62.99
HS00588C	8.5", Curved	\$64.99

OFFSET HANDLES AVAILABLE

Heritage D-42T Thinner

42 tooth blending shear. Ice-tempered stainless steel with precision v-notch teeth. Hammer finished handles with silencer and thumb pad. Available with offset handles.

Item#	Description	Price
HS0054T	42 Tooth	\$59.99
HS0054OT	42 Tooth, Offset	\$61.99

Heritage D-4 Ear and Nose

4" long with ball point safety tips to prevent injury. Ideal for trimming around face, eyes and feet. Available with straight or curved blades.

Item#	Description	Price
HS00504S	4", Straight	\$18.99
HS00504C	4", Curved	\$20.99

Heritage D-6 Safety Tip

6.5" long with ball point safety tips to prevent injury. Available with straight or curved blades. Great for trimming around feet and face.

Item#	Description	Price
HS00565B	6.5", Straight	\$48.95
HS00565BC	6.5", Curved	\$49.95

SCISSORS AND ACCESSORIES • • • • • MILLERS FORGE & HERITAGE SHEARS

NEW! Chris Christensen Shears

EXCEPTIONAL QUALITY SHEAR WITH A LIFETIME SHARPENING GUARANTEE!*

*All Chris Christensen Shears feature an exclusive Lifetime Free Sharpening by Chris Christensen Systems. Each Chris Christensen Shear Includes a carrying case, oil, finger inserts and polishing chamois.

1. Long Shank Shear

This classic Filipino style shear has razor edges and is perfectly balanced from the handles to the tips. This is a great shear for the bulk of your cutting needs.

Item#	Description	Price
HS45116	Long Shank Shear, 8"	\$159.00
HS45117	Long Shank Shear, 10"	\$168.00

2. Razor Shaper Shear

This unique shear is a razor shaper for hair blending and thinning and a razor shear for cutting, all in one. Just palm the shear to use it as a razor without having to change tools. Very light weight and slim in size.

HS45100	Razor Shaper Shear	\$198.50
---------	--------------------	----------

3. Saturn Light Weight Shear

This is a high performance, razor edge shear. The holes drilled through the blades on this shear reduce the weight of this shear by 30%. This combined with its ergonomic design allow you to great performance without all the weight.

HS45113	Saturn Light Weight Shear, 8"	\$195.00
HS45114	Saturn Light Weight Shear, 10"	\$205.00

4. Short Shank Shear

This razor edge shear is a pleasure to work with as your standard grooming shears. The short shank allows you to use more cutting blade than other shears. It opens and closes with less hand motion than long shank shears. Available in straight or curved.

HS45120	Short Shank Shear, Straight, 7"	\$130.00
HS45121	Short Shank Shear, Curved, 7"	\$140.00
HS45108	Short Shank Shear, Straight, 8"	\$170.00
HS45109	Short Shank Shear, Curved, 8"	\$170.00

Left-Handed Short Shank Shears

HS45120L	Short Shank Shear, Straight, 7"	\$135.00
HS45121L	Short Shank Shear, Curved, 7"	\$145.00
HS45108L	Short Shank Shear, Straight, 8"	\$175.00
HS45109L	Short Shank Shear, Curved, 8"	\$179.00

5. XS Short Shank Shear

This razor edge shear is a pleasure to work with as your standard grooming shears. The short shank allows you to use more cutting blade than other shears. Short shank shears open and close with less hand motion than long shank shears.

HS45110	XS Short Shank Shear, Straight, 10"	\$190.00
HS45111	XS Short Shank Shear, Curved, 10"	\$198.50

6. Zone Trimming Shear

This even handled razor edge shear is blunted & fillistered so that it can trim around tight places without nicking or pinching the skin at the tips. Perfect for feet, eyes, ears and mouth areas.

HS45106	Zone Trimming Shear, 5.5"	\$147.00
---------	---------------------------	----------

7. Termite Texturizing Shear

This fine tooth texturizing has 26 teeth with a razor cutting blade for fine finishing. It is designed with offset handles for ergonomic comfort. The 4.5" length makes it perfect for up close detail work and finishing touches.

HS45102	Termite Texturizing Shear, 4.5"	\$147.00
---------	---------------------------------	----------

8. Texturizing Shear, Crv Tooth

This razor edge texturizer is custom designed with triple point teeth for precision blending. The wave pattern of the teeth follow the cutting angle of the blade for professional results. This is perfect for long coats.

HS45104	Texturizing Shear, Crv Tooth, 6"	\$199.50
HS45104L	Texturizing Shear, Crv Tooth, 6" (LEFTY)	\$205.00
HS45105	Texturizing Shear, Crv Tooth, 7"	\$210.00

Long Shank Shears (8" or 10")

'Razor Shaper' Blending Shear

'Saturn' Light Weight Shears (8" or 10")

Short Shank Shears (Curved or Straight)



10" XS Short Shank Shears (Curved or Straight)

5.5" 'Zone' Trimming Shear

6" 'Termite' Texturizing Shear

6" Curved Tooth Texturizing Shear

Discontinued

'Barbicide' Scissor & Clipper Blade Disinfectant

Barbicide is germicidal, fungicidal, virucidal and pseudomonocidal. Kills HIV - 1 (AIDS Virus) and Hepatitis B virus herpes, ringworm, staph and numerous other pathogenic organisms. Disinfects scissors, combs, brushes and salon surfaces. Metals can be immersed for hours without rusting. Fully biodegradable with a pleasant fragrance. Dilutes to 62.5ml to 1L of water.

Stock#	Description	Price
HS985	Barbicide Jar	\$27.95
HS986	Barbicide 16 oz.	\$6.95
HS987	Barbicide 64 oz.	\$19.95



NEW! Chris Christensen Shear Oil

Discontinued

Lubricating oil for scissors and shears. Apply a few drops to the screw head, screw tip, and between the blades in the screw in order to keep your scissors working smoothly.

Item#	Description	Price
HS45203	Tube of Shear Oil, 1/4 oz.	\$5.50



Heritage Finger Rings



Rubber rings which attach easily to shears, providing a more comfortable, customized fit to reduce hand fatigue and add better control.

Stock#	Description	Price
HS905	Small (2 pack)	\$2.99
HS906	Large (2 pack)	\$2.99



Genuine Rubber Finger and Thumb Pads

Finger and thumb pads. Fits most popular shears. Rubber inserts are designed to reduce the size of the finger and thumb holes, providing cushioning for the fingers and reducing fatigue.

Stock#	Description	Price
HS901	Thumb Pad, single	\$2.75
HS902	Finger Pad, single	\$2.50



Scissor Care and Maintenance Tips

Storage - Be sure to store your scissors in a safe place when they are not in use. Secure them in padded cases, or pouches, to protect their cutting surface.

Cleaning - Be sure to clean your scissors in between uses, as hair, moisture and chemicals can cause corrosion to occur. Regular cleaning will ensure you get the maximum life out of your shears. With a small lint-free soft cloth, wipe all hair and moisture from the blades. With the scissors in the closed position, unscrew the scissor adjuster so that you can wipe between each blade.

Oiling - It is wise to oil your scissors at the end of each day. A coating of oil will protect your scissors by keeping out moisture, as well as ensuring a continued smooth glide to the blades. While the blades are separated, dab just single drop of lubricating oil onto the pivot area, then smear some down the length of the inside of each blade. Re-assemble your shears, by re-tightening the screw while your shears in the closed position.

Sharpening - Scissors usually require sharpening every three to six months when regularly used. Make sure your scissors are sharpened by a professional service, as they are trained and equipped with the right tools to protect your shears during the sharpening process. This ensures the maximum life from your investment.

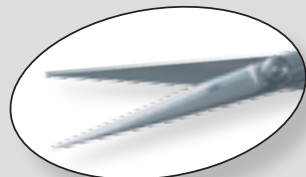
Balance Adjustment - It is always wise to check your scissors adjustment, after you have lubricated them, or if they are feeling too tight or too loose. Make sure your scissors are closed when adjusting the screw. Open the shear, keeping the bottom blade horizontal. Let the top blade fall to meet the bottom blade. If the top blade does not drop to meet the bottom blade, your screw is too tight. If the top blade drops too suddenly, then it is too loose.

Once you feel your shears are correctly lubricated, and or balanced, open and close them a few times to allow the oil to work its way into the pivot area.

Precision Scissor Blade Sharpening

Don't trust your expensive equipment to amateurs! All Shears are tested to our satisfaction before being returned. Free Return Shipping when you send 8 or more scissors.

Item#	Description	Price
HS999	Scissor Sharpening (Regular Edge)	\$15.95
HS999S	Scissor Sharpening (Serrated Edge)	\$19.95
HS999C	Scissor Sharpening (Convex Edge)	\$29.95



Regular Edge



Serrated Edge



Convex Edge



SATISFACTION GUARANTEED!

SCISSORS AND ACCESSORIES

SCISSOR MAINTENANCE & SHARPENING